

CARNAHAN · PROCTOR · CROSS, INC.

CONSULTING ENGINEERS · SURVEYORS · PLANNERS

6101 WEST ATLANTIC BOULEVARD, MARGATE, FLORIDA 33063  
PHONE: 954-972-3959 FAX: 954-972-4178

JULY 2004

010404

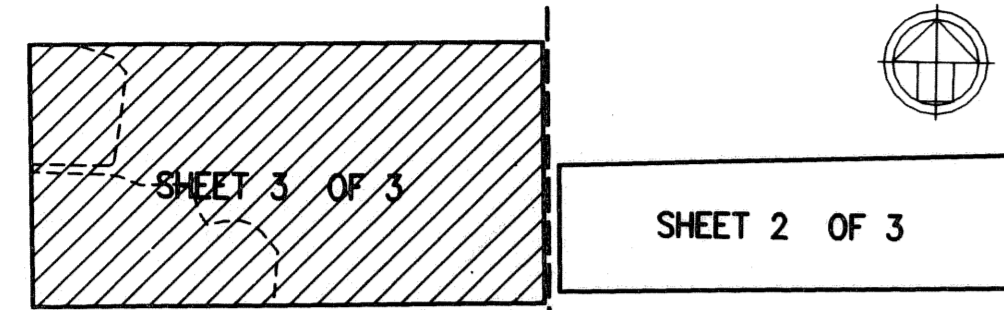
JM

# WALKER PRESERVE PARCEL

A REPLAT OF PORTIONS OF TRACTS 29, 30, 31, AND 32, BLOCK 44, THE PALM BEACH FARMS CO. PLAT NO. 3, AS RECORDED IN PLAT BOOK 2 AT PAGE 45 OF THE PUBLIC RECORDS OF PALM BEACH COUNTY, FLORIDA AND THE SOUTH ONE-HALF OF THE SOUTHWEST ONE-QUARTER OF SECTION 12, TOWNSHIP 45 SOUTH, RANGE 41 EAST, ALL BEING IN SECTION 12, TOWNSHIP 45 SOUTH, RANGE 41 EAST, PALM BEACH COUNTY, FLORIDA



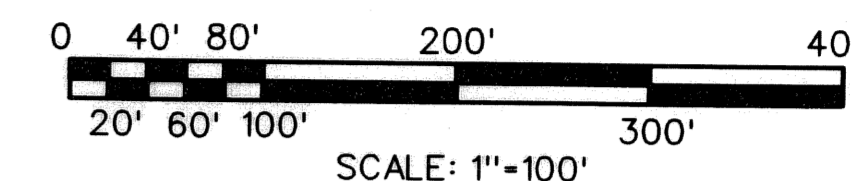
P.131



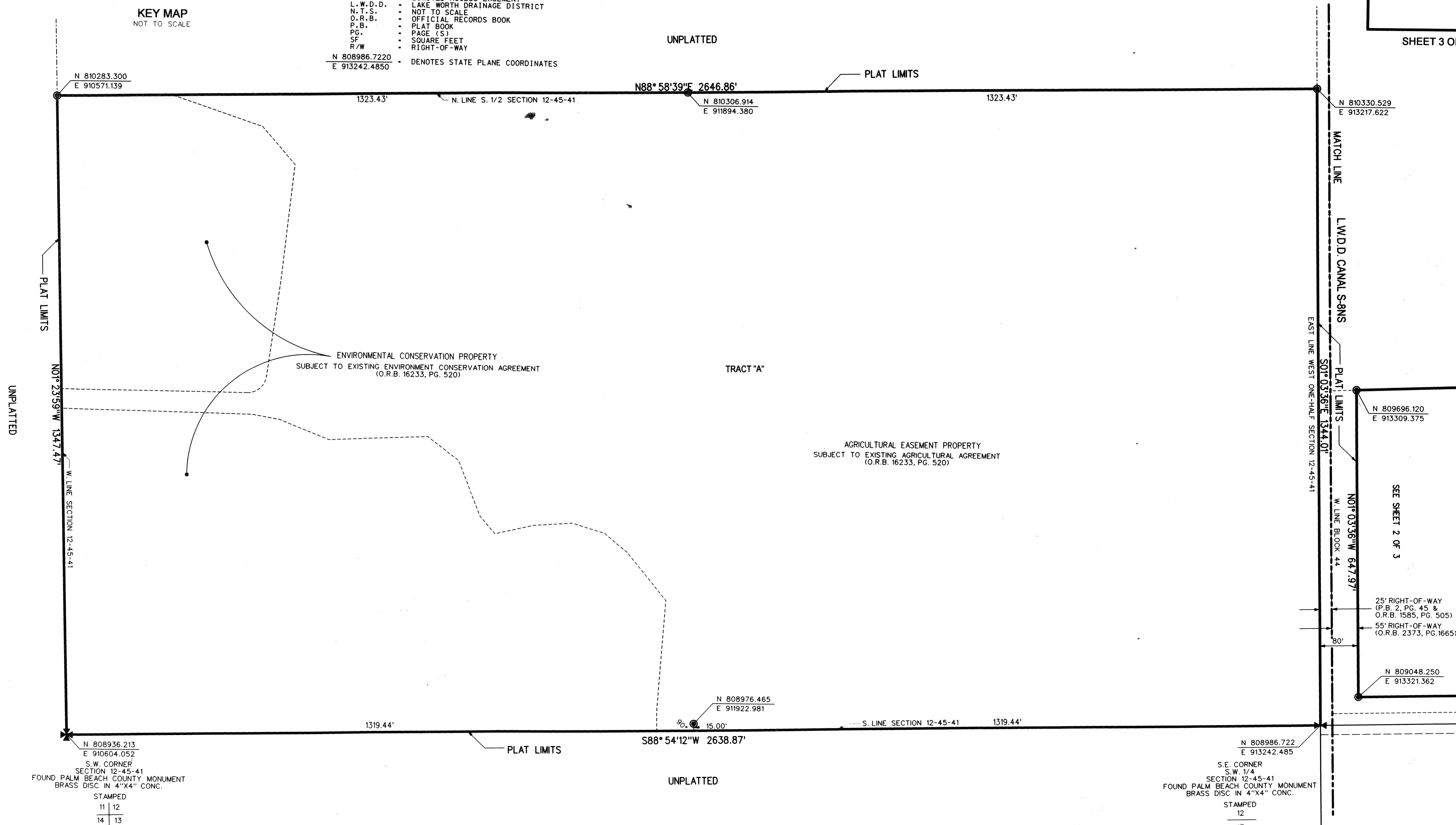
KEY MAP  
NOT TO SCALE

### LEGEND

- SET PERMANENT REFERENCE MONUMENT (P.R.M.) 4" DIAMETER CONCRETE MONUMENT W/ BRASS DISC \*LB2936 (UNLESS OTHERWISE NOTED)
- CONC. CONCRETE
- F.D.O.T. FLORIDA DEPARTMENT OF TRANSPORTATION
- L.A.E. LIMITED ACCESS EASEMENT
- L.W.D.D. LAKE WORTH DRAINAGE DISTRICT
- N.T.S. NOT TO SCALE
- O.R.B. OFFICIAL RECORDS BOOK
- P.B. PLAT BOOK
- P.G. PAGE (S)
- SF. SQUARE FEET
- R/W. RIGHT-OF-WAY
- N 808986.7220  
E 913242.4850 DENOTES STATE PLANE COORDINATES



SHEET 3 OF 3



SUBDIVISION WALKER PRESERVE  
 BOOK 04  
 FLOOD MAP # 100 A  
 ZONING AGR  
 ZIP CODE 33407  
 SE  
 TAZ 742  
 PUB NAME

FILE: F:\010404\cadd\y04pp2.dgn  
 DATE: 04-Nov-04 10:43

N 808936.213  
 E 910604.052  
 S.W. CORNER  
 SECTION 12-45-41  
 FOUND PALM BEACH COUNTY MONUMENT  
 BRASS DISC IN 4"x4" CONC.  
 STAMPED  

11	12
14	13

N 808986.722  
 E 913242.485  
 S.E. CORNER  
 S.W. 1/4  
 SECTION 12-45-41  
 FOUND PALM BEACH COUNTY MONUMENT  
 BRASS DISC IN 4"x4" CONC.  
 STAMPED  

12
13